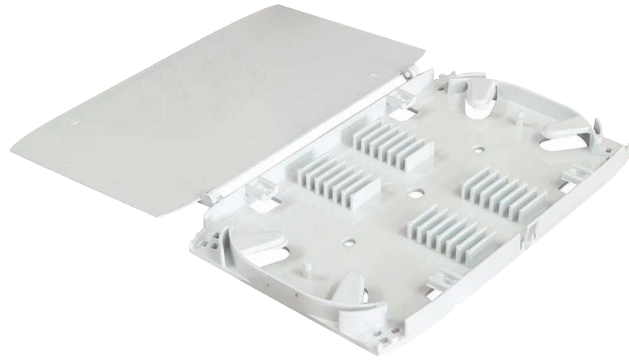


# ODTray0202



## Overview

Fiber optic splice tray is used for optic fiber management, storage and fiber optic fusion splice protection, easy for installation and movement.

The splice tray expands fiber splice capabilities as well as provides the splicing location for fiber optic cables. It can be put into the fiber distribution frame, fiber splice closure, optic terminal box etc.

## Applications

- FTTx networks
- Data communication networks
- Indoor applications

## Features

- Splice-tray configurations offered: 6, 12 and 24 Fibers.
- Types of Splice Trays: Plastic (with a clear Cover)
- Can be used in 1U, 2U or 4U Rack-mount patch panels.

## Specifications

Item	Description
Height	220mm
Weight	115mm
Depth	12mm
Number Of Ports	-
Max. Splicing Capacity	24 Splices
Suitable For Adapter Type	-
Number Of Cable Entry	4
Material	PC+ABS
Color	White grey
Operating Temperature	-40°C ~ +50°C
Complaint	RoHS, REACH/SvHC